



Sistema de classificação ETIM e a construção de fichas técnicas harmonizadas para os materiais de construção

Integração Digital nos Materiais de Construção

26 de Outubro 2022
Pedro Mêda

Objetivos da apresentação

- Compreender a importância da digitalização dos produtos de construção no contexto atual e futuro
- ETIM como uma das base para acelerar a transição digital e sustentável



Imagine que...



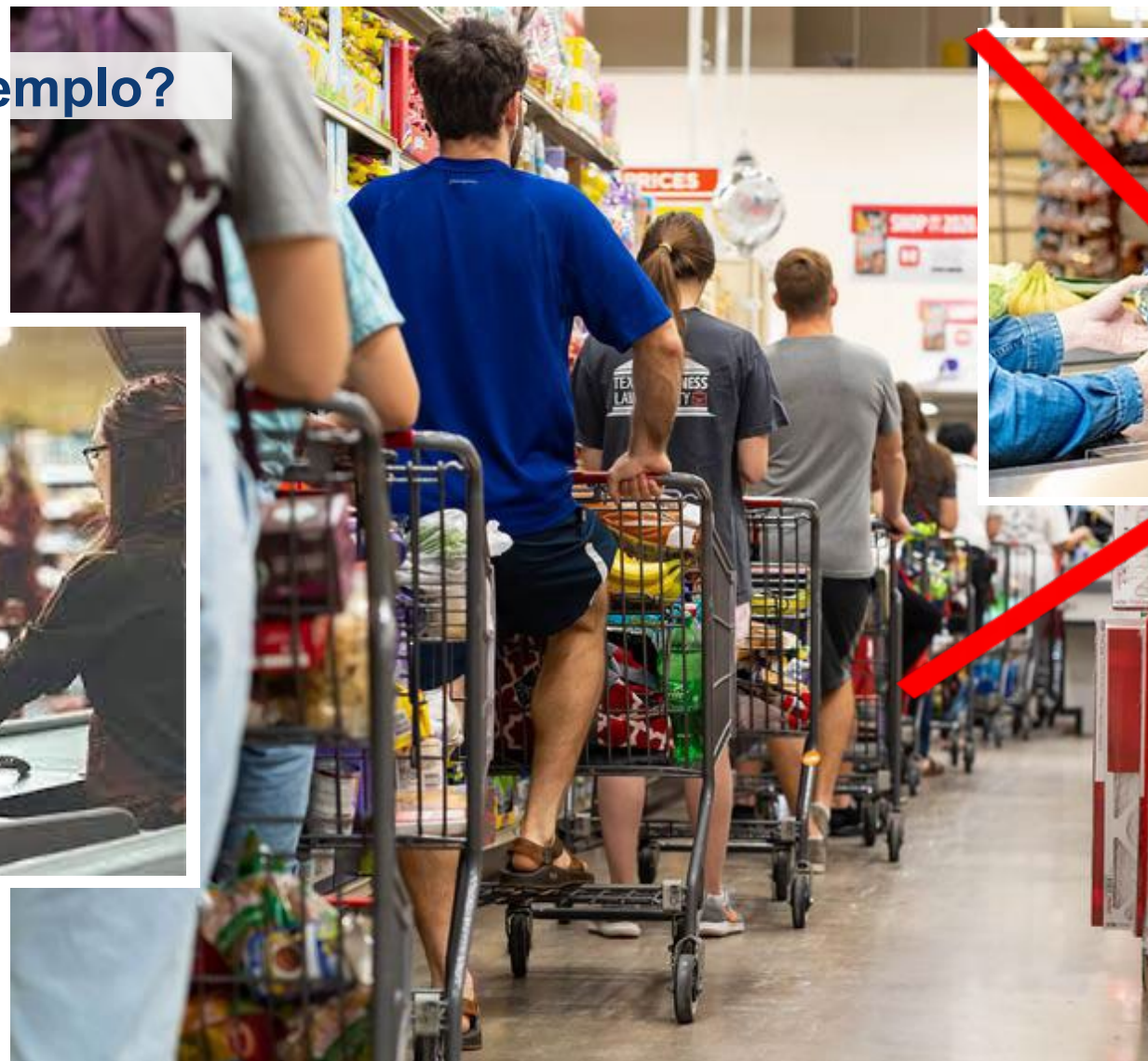
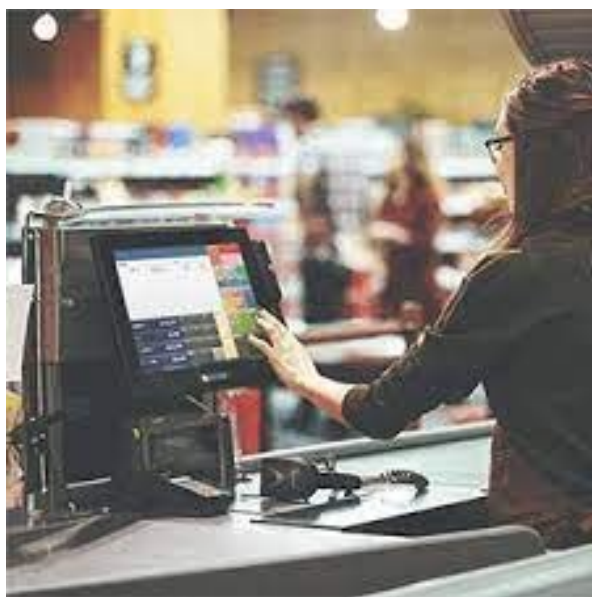
Imagine que...



Imagine que...



Porquê este exemplo?



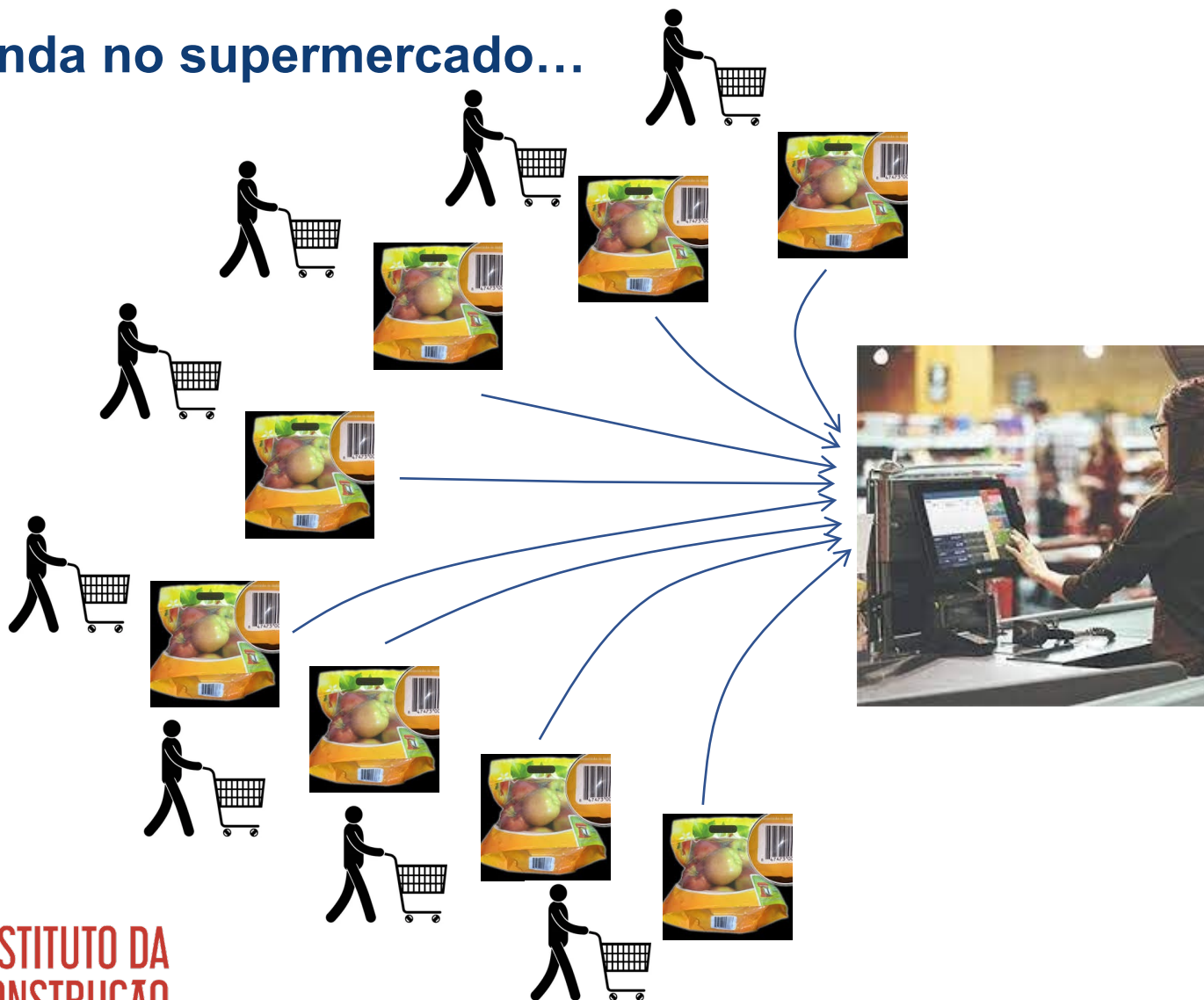
Porquê este exemplo?



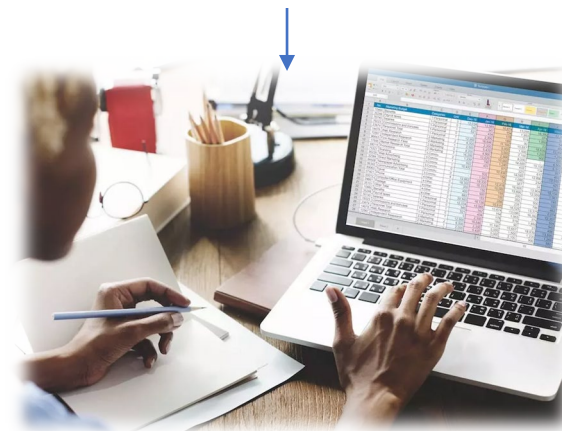
Exemplo comum e geral de como uma cadeia de valor elevou os padrões de eficiência



Ainda no supermercado...



Em resumo



Ainda no supermercado...



Espécie:	Jonagold	
Produtor:	NN	
Calibre:	100/110	
Categoria:	II	
Origem:	Portugal	
Peso:	0,5	kg
Código de barras		
Preço:	1,90	€/kg

...

Ainda no supermercado...



ATRIBUTOS

VALORES

UNIDADES

Espécie:	Jonagold	
Produtor:	NN	
Calibre:	100/110	
Categoria:	II	
Origem:	Portugal	
Peso:	0,5	kg
Código de barras		
Preço:	1,90	€/kg

...

Ainda no supermercado...

Maças

CLASSE



Fruta

GRUPO

ATRIBUTOS

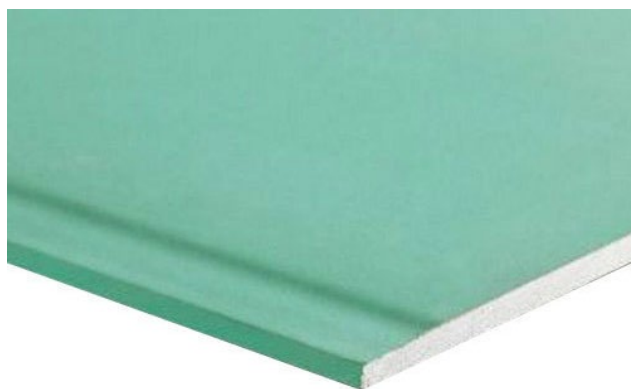
VALORES

UNIDADES

Espécie:	Jonagold	
Produtor:	NN	
Calibre:	100/110	
Categoria:	II	
Origem:	Portugal	
Peso:	0,5	kg
Código de barras		
Preço:	1,90	€/kg

...

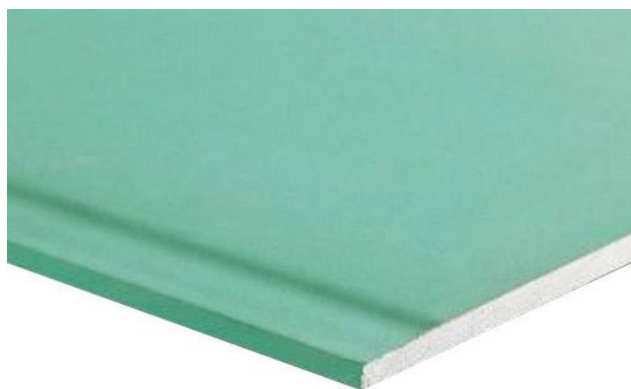
No setor da Construção



No setor da Construção

Gesso Cartonado

CLASSE



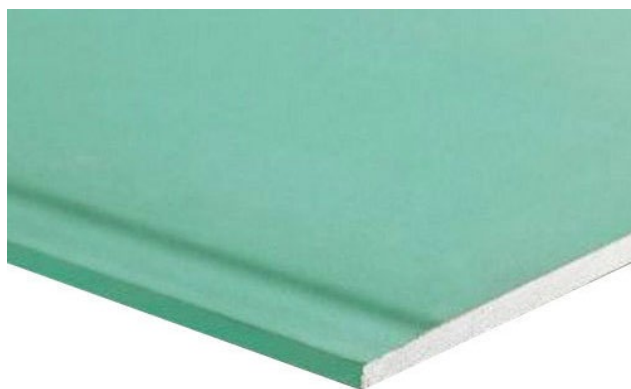
Materiais de
acabamento

GRUPO

No setor da Construção

Gesso Cartonado

CLASSE



Materiais de
 acabamento

GRUPO

ATRIBUTOS

VALORES

UNIDADES

Espessura: mm

Produtor: NN

Tipo de placa EN 520:

Cor:

Tipo de arestas:

Peso: kg

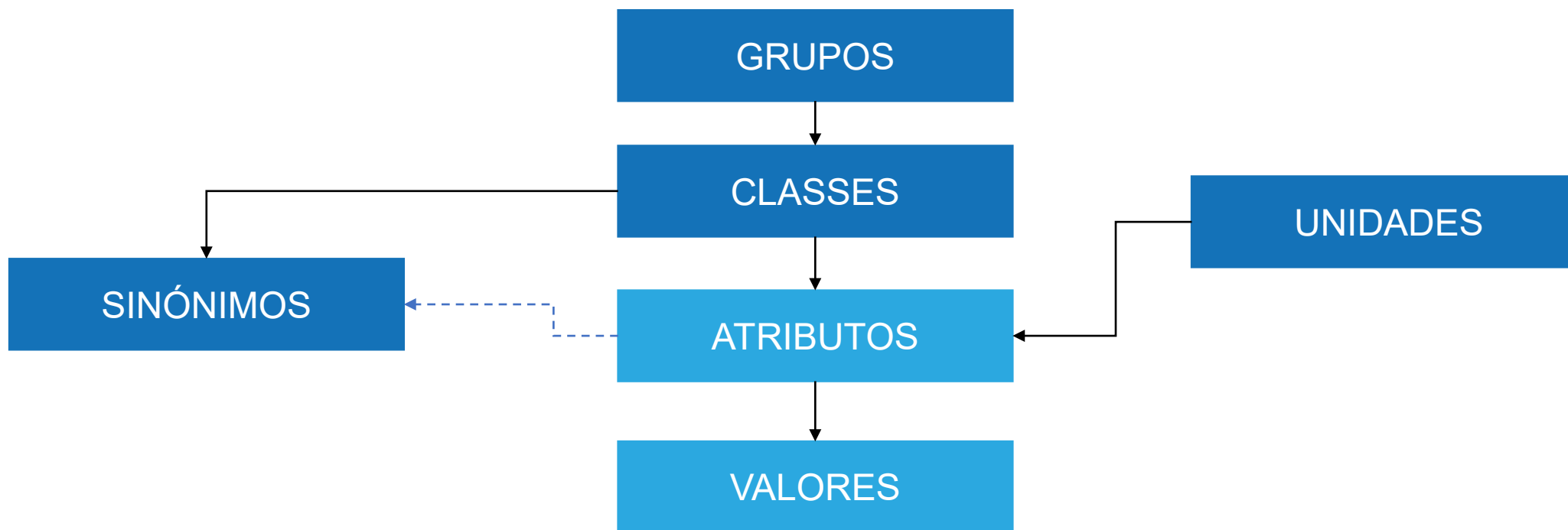
Código de barras

Preço:

...



ETIM
International





Gypsum board

Class code: EC003143
 Sector: W B M
 Group code: EG020100 - Building - Finishing materials
 Releases: **DYNAMIC**
 Class version: 4
 Revision: 4
 Status: UnderConstruction



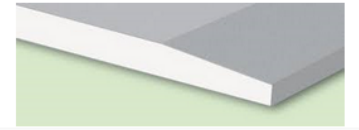
[Features](#) | [Translations](#) | [Discussion](#) | [Reference products](#) | [Linked ETIM modelling classes](#) | [Revisions](#)

Def	Code	Description	Type	Unit	Unit (imp.)	Value code - Description
1	EF001438	Length	N	mm	inch	
2	EF000008	Width	N	mm	inch	
3	EF000125	Thickness	N	mm	inch	
4	EF000167	Weight	N	kg/m ²	lb/ft ²	
5	EF010361	Edge finishing long side	A			
6	EF010362	Edge finishing head end	A			
7	EF010366	Colour visible surface	A			
8	EF000664	Suitable for wall mounting	L			
9	EF010223	Suitable for floor	L			
10	EF021180	Suitable for ceiling mounting	L			
11	EF024696	Suitable for damp space	L			
12	EF021057	With insulation	L			
13	EF010096	Fire retardant impregnated	L			
14	EF010359	Suitable as plaster board	L			
15	EF025016	With perforation	L			
16	EF010227	With decorative finish	L			
17	EF022045	Lead insert	L			
18	EF001281	Bendable	L			
19	EF013884	Suitable for fire protection of load-bearing constructions	L			
20	EF013908	Fixing	L			
21	EF002480	Outdoor application	L			
22	EF013887	Suitable for protection from radiation	L			
23	EF013888	Factory bent board	L			
24	EF001210	Glass-fibre reinforced	L			
25	EF010369	Fleece reinforced	L			
26	EF013891	Type designation A according to EN 520	L			
27	EF013892	Type designation D according to EN 520	L			
28	EF013894	Type designation E according to EN 520	L			



Gypsum board

Class code	EC003143	Class version	4
Sector	W B M	Revision	4
Group code	EG020100 - Building - Finishing materials	Status	UnderConstruction
Releases	DYNAMIC		



Gypsum board

Class code: EC003143

Sector: W B M

Group code: EG020100 - Building - Finishing materials

Releases: **DYNAMIC**

ETIM modelling classes Revisions Show/hide

Type	Unit	Unit (imp.)	Value code - Description
N	mm	inch	
N	mm	inch	
N	mm	inch	
N	kg/m²	lb/ft²	
A			
A			
A			
L			
L			
L			
L			
L			
L			
L			
L			
L			
L			
L			
L			
L			
L			
L			
L			
L			
L			
L			
L			
L			
L			
L			
L			



ETIM
International

Def	Code	Description
1	EF001438	Length
2	EF000008	Width
3	EF000125	Thickness
4	EF000167	Weight
5	EF010361	Edge finishing long side
6	EF010362	Edge finishing head end
7	EF010366	Colour visible surface
8	EF000664	Suitable for wall mounting
9	EF010223	Suitable for floor
10	EF021180	Suitable for ceiling mounting
11	EF024696	Suitable for damp space
12	EF021057	With insulation
13	EF010096	Fire retardant impregnated
14	EF010359	Suitable as plaster board
15	EF025016	With perforation
16	EF010227	With decorative finish
17	EF022045	Lead insert
18	EF001281	Bendable
19	EF013884	Suitable for fire protection of load-bearing constructions
20	EF013908	Fixing
21	EF002480	Outdoor application
22	EF013887	Suitable for protection from radiation
23	EF013888	Factory bent board
24	EF001210	Glass-fibre reinforced
25	EF010369	Fleece reinforced
26	EF013891	Type designation A according to EN 520
27	EF013892	Type designation D according to EN 520
28	EF013894	Type designation E according to EN 520



Gypsu
 Class co
 Sector
 Group co
 Releases

Feature:

1
2
3
4
5
6
7
8
9
10
11
12
13
14
15
16
17
18
19
20
21
22
23
24
25
26
27
28

Unit (imp.)	Value code - Description
inch	
inch	
inch	
lb/ft²	



ETIM
International

Gypsum board

Class code EC003143
Sector W B M
Class version 4
Revision 4



40	EF013881	Thermal conductivity according to EN 12664	N	W/(m.K)	W/(ft.K)	
41	EF013932	Air tightness according to EN 12114	N	m ³ /m ² h50Pa		
42	EF026338	Euro fire class according to EN 13501-1	A			1 EV010732 A1 2 EV010733 A2 3 EV000074 B 4 EV000084 C 5 EV000413 D 6 EV000647 E 7 EV000334 F 8 EV000154 Other
43	EF026363	Euro class smoke production according to EN 13501-1	A			1 EV023916 s1 2 EV023917 s2 3 EV023918 s3 4 EV000154 Other
44	EF026364	Euro class flaming droplets/particles according to EN 13501-1	A			1 EV023919 d0 2 EV023920 d1 3 EV023921 d2 4 EV000154 Other
45	EF013906	Fire protection ability according to EN 13501-2	A			1 EV016315 K1-10 2 EV016316 K2-10 3 EV016317 K2-30 4 EV016318 K2-60 5 EV000154 Other

27 EF013892 Type designation D according to EN 520
28 EF013894 Type designation E according to EN 520

Show/hide
Value code - Description

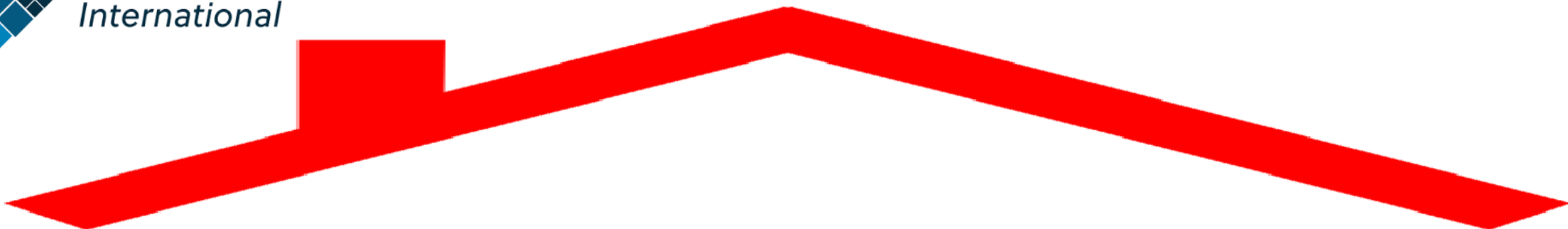


Gypsum board

Class code	EC003143	Class version	4
Sector	W B M	Revision	4
Group code	EG020100 - Building - Finishing materials	Status	UnderConstruction
Releases	DYNAMIC		

- [Features](#) |
 [Translations](#) |
 [Discussion](#) |
 [Reference products](#) |
 [Linked ETIM modelling classes](#) |
 [Revisions](#)

Def	Code	Description	Type	Unit	Unit (imp.)	Value code - Description
1	EF001438	Length	N	mm	inch	
2	EF000008	Width	N	mm	inch	
3	EF000125	Thickness	N	mm	inch	
4	EF000167	Weight	N	kg/m ²	lb/ft ²	
5	EF010361	Edge finishing long side	A			
6	EF010362	Edge finishing head end	A			
7	EF010366	Colour visible surface	A			
8	EF000664	Suitable for wall mounting	L			
9	EF010223	Suitable for floor	L			
10	EF021180	Suitable for ceiling mounting	L			
11	EF024696	Suitable for damp space	L			
12	EF021057	With insulation	L			
13	EF010096	Fire retardant impregnated	L			
14	EF010359	Suitable as plaster board	L			
15	EF025016	With perforation	L			
16	EF010227	With decorative finish	L			
17	EF022045	Lead insert	L			
18	EF001281	Bendable	L			
19	EF013884	Suitable for fire protection of load-bearing constructions	L			
20	EF013908	Fixing	L			
21	EF002480	Outdoor application	L			
22	EF013887	Suitable for protection from radiation	L			
23	EF013888	Factory bent board	L			
24	EF001210	Glass-fibre reinforced	L			
25	EF010369	Fleece reinforced	L			
26	EF013891	Type designation A according to EN 520	L			
27	EF013892	Type designation D according to EN 520	L			
28	EF013894	Type designation E according to EN 520	L			



O ETIM no MC Digital

Acompanhamento dos trabalhos do
Comité Técnico Materiais de Construção.

ETIM TC - Building materials

Building
1.148
classes




O ETIM no MC Digital

Traduções

Gypsum board

Class code	EC003143	Class version	4
Sector	W B M	Revision	4
Group code	EG020100 - Building - Finishing materials	Status	UnderConstruction
Releases	DYNAMIC		



[Features](#) |
 Translations |
 [Discussion](#) |
 [Reference products](#) |
 [Linked ETIM modelling classes](#) |
 [Revisions](#)

	Translation	Synonyms
	Gypsum board	Ceiling board ; Drywall board ; Gypsum board ; Gypsum cardboard board ; Gypsum cardboard panel ; Gypsum fiber board ; Gypsum fibre board ; Plasterboard ; Wallboard ;
	Gipskartonplaat	Gipskartonplaat ;
	Plaque gypse	Plaque gypse ;
	Gipsplader	Fiber gips plader ; Gipsplader ;
	Gipskartonplaat	Gipskartonplaat ; Gipsplaat ; Gipsvezelplaat ; Metalstud plaat ; Plafondplaat ; Stucplaat ;
	Gypsum cardboard board	Ceiling board ; Drywall board ; Gypsum board ; Gypsum cardboard board ; Gypsum cardboard panel ; Gypsum fiber board ; Gypsum fibre board ; Plasterboard ; Wallboard ;
	Gypsum board	Ceiling board ; Drywall board ; Gypsum board ; Gypsum cardboard board ; Gypsum cardboard panel ; Gypsum fiber board ; Gypsum fibre board ; Plasterboard ; Wallboard ;
	Kipsplaat	Kipsplaat ;
	Kipsilevy	Kipsilevy ;
	Plaque gypse	Plaque gypse ;
	Gipsplatte	Gipsbauplatte ; Gipsfaserplatte ; Gipskarton-Bauplatte ; Gipskartonplatte ; Gipsplatte ; Gipsputzplatte ;
	Pannello di cartongesso	Pannello di cartongesso ;
	Gipsplate	Armert gipsplate ; Gipsfiberplate ; Gipsplate ;
	Płyta gipsowa-kartonowa	Płyta g/lk ; Płyta gipsowa-kartonowa ; Płyta l/g ; Płyta-kartonowa-gipsowa ; Regips ;
	Gipsskiva	Fibergipsskiva ; Gipsplatta ; Gipsskiva ; Takgips ; Takplank ;
	Gipsplatte	Gipsbauplatte ; Gipsfaserplatte ; Gipskarton-Bauplatte ; Gipskartonplatte ; Gipsplatte ; Gipsputzplatte ;

O ETIM no MC Digital

Diagnóstico sobre produtos
não classificados/inexistentes
na base de dados.

Search for class...

Search for modelling c

Search for feature...

Search for value...

0 Results!

O ETIM no MC Digital

Melhoria das características previstas em alguns produtos.

Sandwich panel

Class code	EC011925	Class version	4
Sector	B M T	Revision	5
Group code	EG019720 - Sheet material	Status	ReadyForPublication
Releases	DYNAMIC		

Features Translations Discussion Reference products Linked ETIM modelling classes Revisions

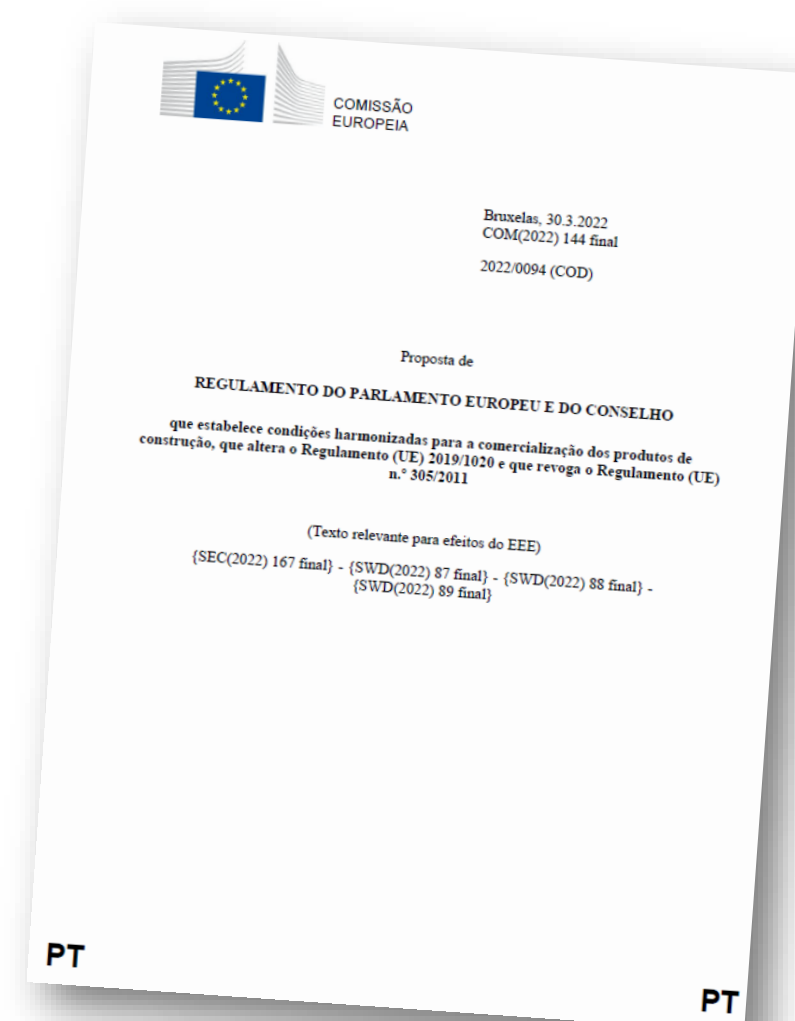
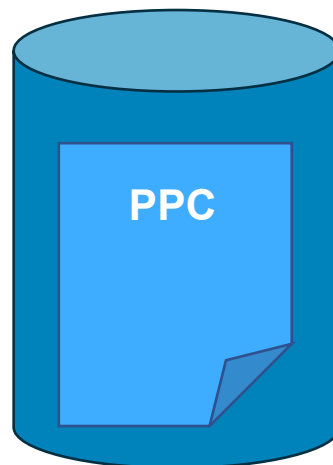
	Def	Code	Description	Type	Unit	Unit (imp.)
1		EF025663	Material sheet 1	A		
2		EF025664	Material sheet 2	A		
3		EF022576	Material core	A		
4		EF025668	Surface protection sheet 1	A		
5		EF025669	Surface protection sheet 2	A		
6		EF025665	Thickness sheet 1	N	mm	inch
7		EF025666	Thickness sheet 2	N	mm	inch
8		EF025670	RAL-number sheet 1	N		
9		EF025671	RAL-number panel 2	N		
10		EF025672	Overall thickness	N	mm	inch
11		EF000008	Width	N	mm	inch
12		EF001438	Length	N	mm	inch

Contexto estratégico

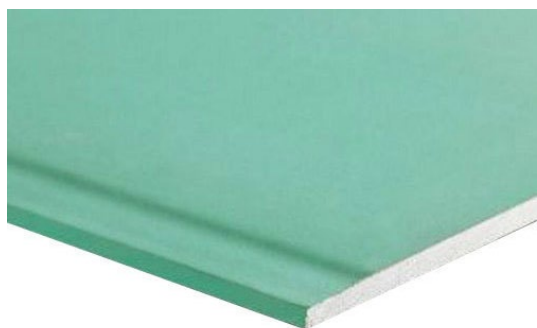
Adequação da regulamentação e simplificação

Todos os documentos e informações relacionados com a proposta podem ser tratados em **formato digital** (por exemplo, o **passaporte digital de produtos**), bem como armazenados, partilhados e consultados de forma duradoura num sistema de informação.

Artigo 78º Base de dados ou sistema de produtos de construção da União



Fichas harmonizadas de produtos



Estrutura única que suporta as características dos produtos de construção

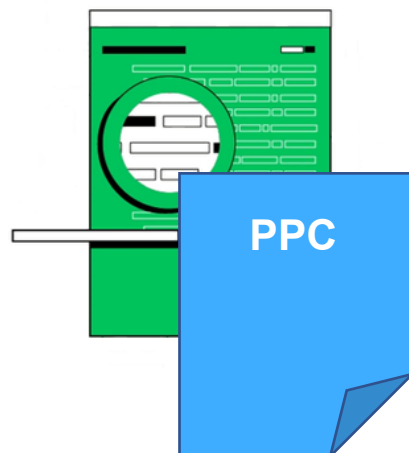
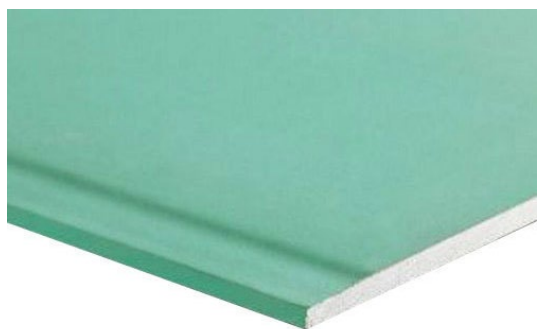
Digital (metadados)

Interoperáveis

Dados rastreáveis

Fonte comum e única e confiável da informação

Fichas harmonizadas de produtos



Estrutura única que suporta as características dos produtos de construção

Digital (metadados)

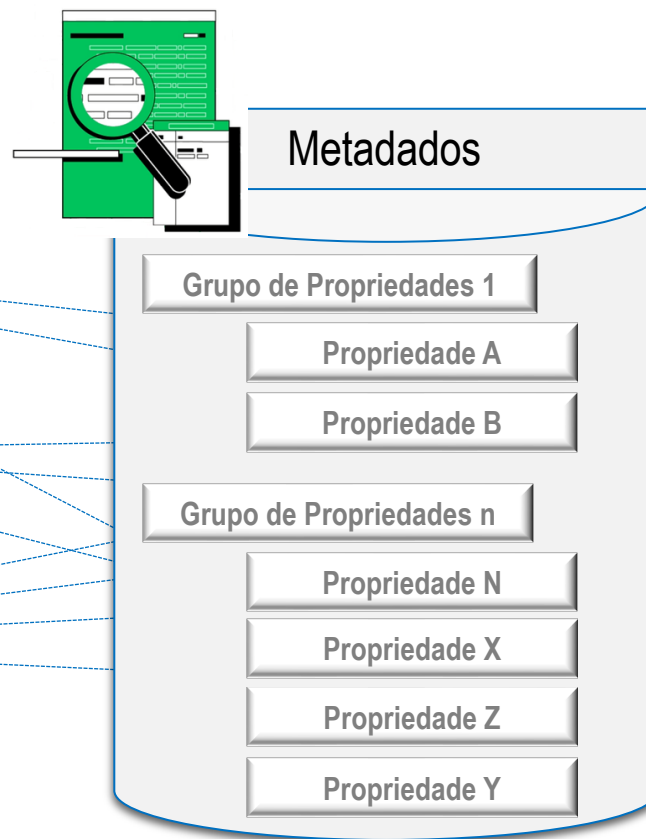
Interoperáveis

Dados rastreáveis

Fonte comum e única e confiável da informação

Passaporte Digital dos Produtos de Construção
(proposta RPC)

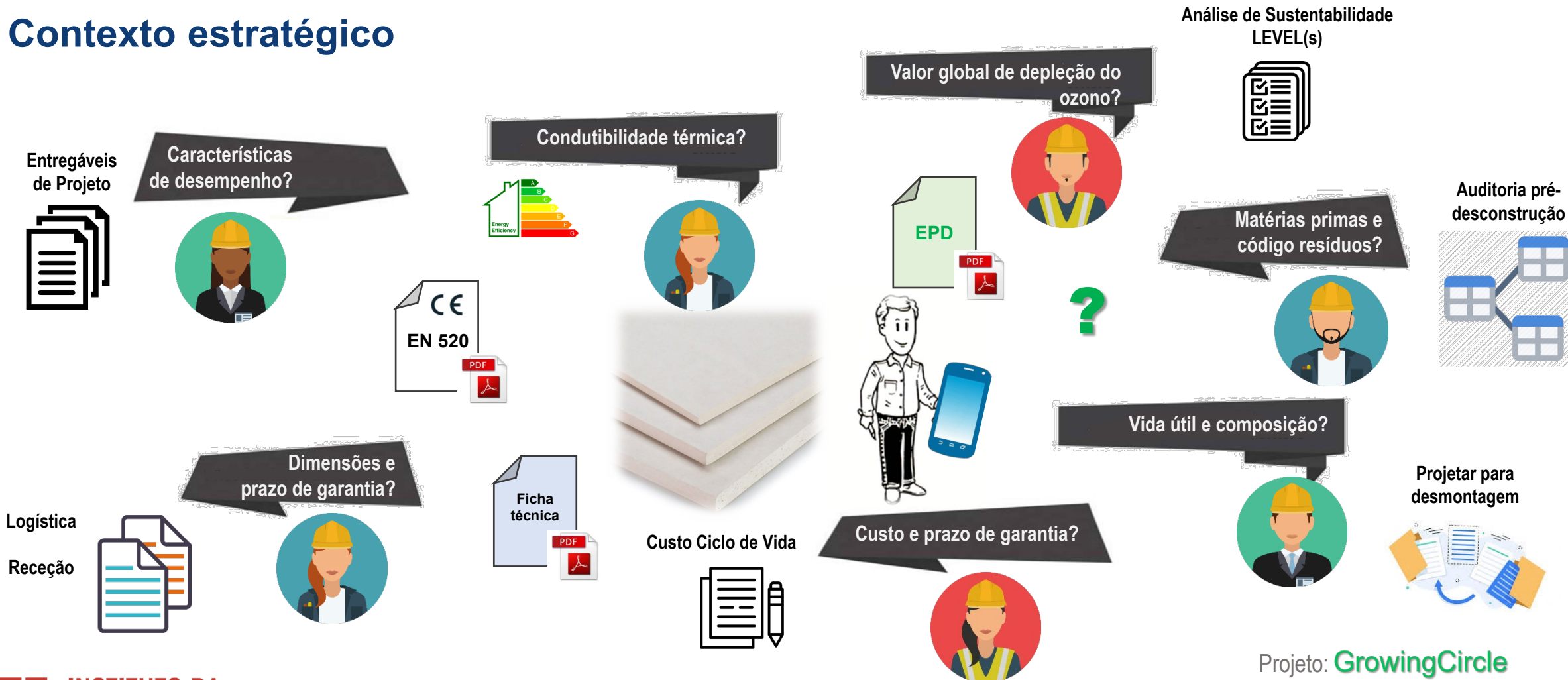
Contexto estratégico



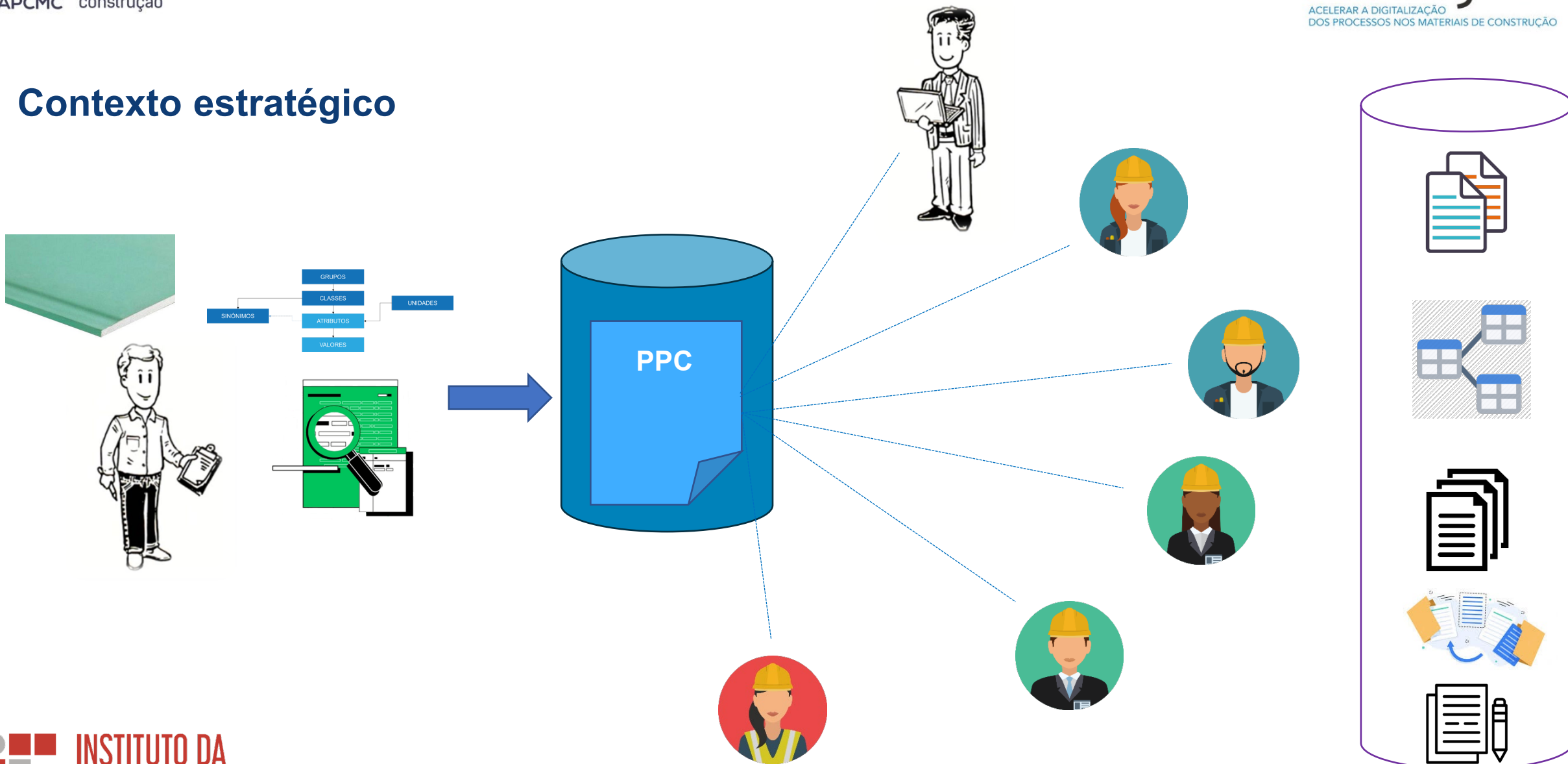
**Passaporte
digital dos
Produtos de
Construção

(PPC)**

Contexto estratégico



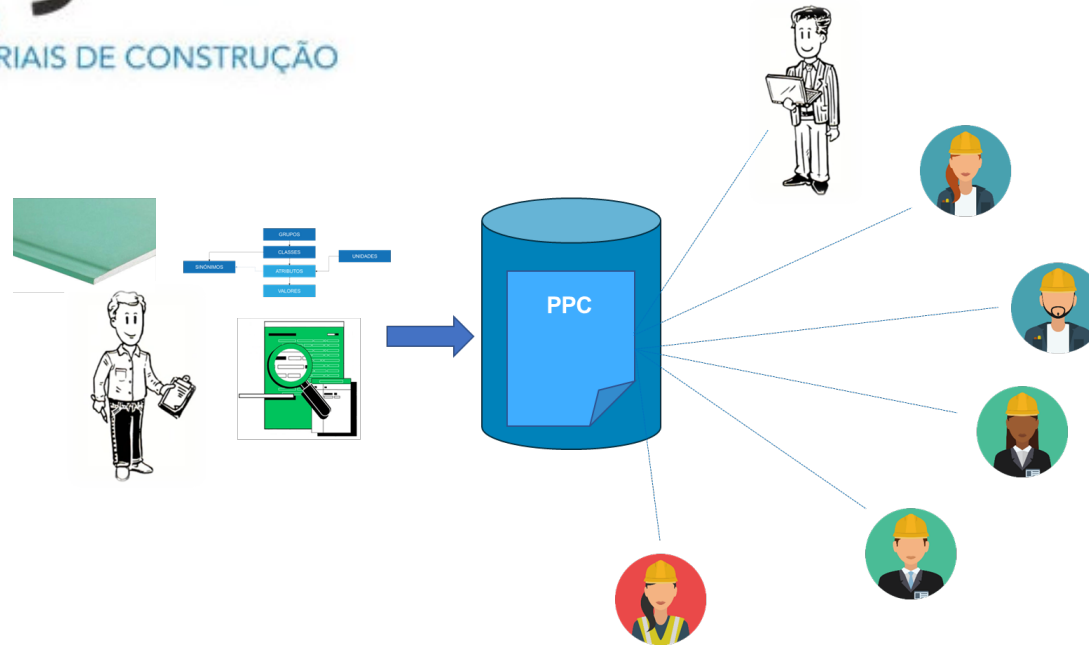
Contexto estratégico



Obrigado!

MCDigital

ACELERAR A DIGITALIZAÇÃO
DOS PROCESSOS NOS MATERIAIS DE CONSTRUÇÃO



Pedro Mêda

IC – Instituto da Construção

pmeda@fe.up.pt

<https://www.linkedin.com/in/pedromêda>