



## Sistema de classificação ETIM e os Passaportes Digitais dos Produtos da Construção

Sessão de Esclarecimento  
11 de novembro 2022

## Objetivos da apresentação

- Compreender a importância da digitalização dos produtos de construção no contexto atual e futuro
- ETIM como uma das base para acelerar a transição digital e sustentável



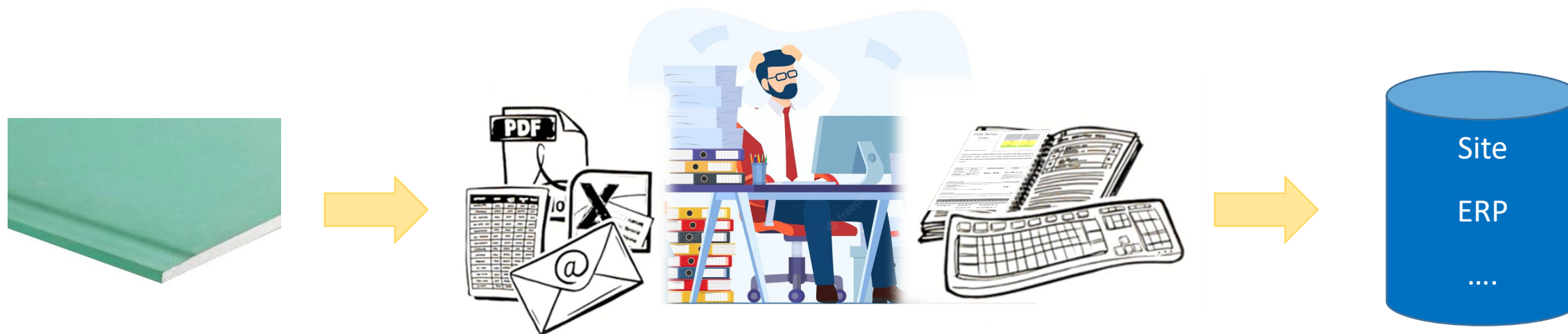
## Os problemas:



## Os problemas:

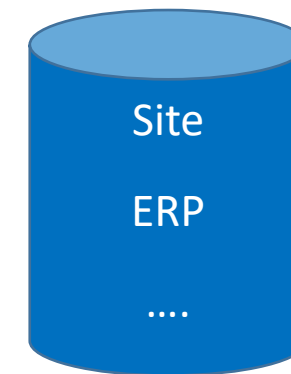
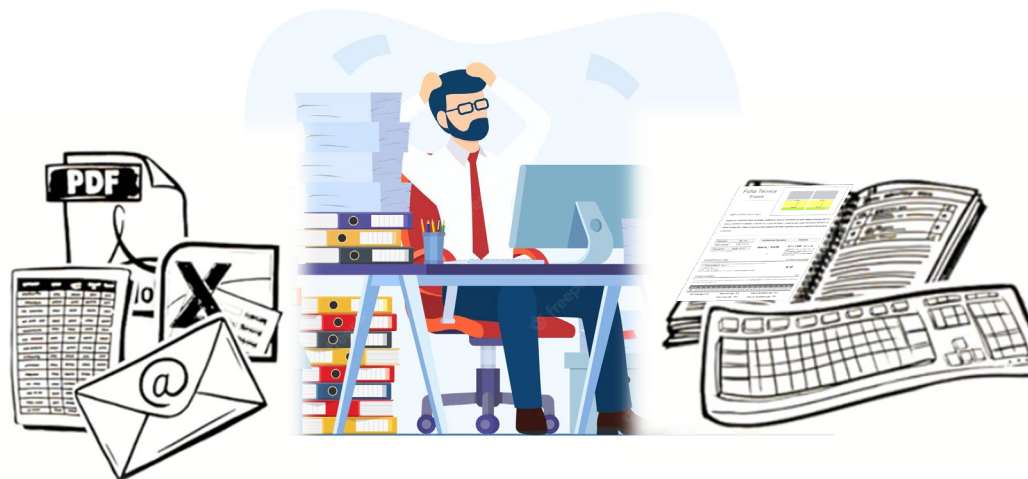
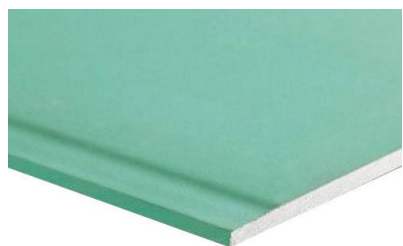


## Os problemas:





## Os problemas:



Gesso Cartonado Hidrófugo

Gesso Cartonado Resistente à Água

Placas Tipo H (EN 520)

## Os problemas:

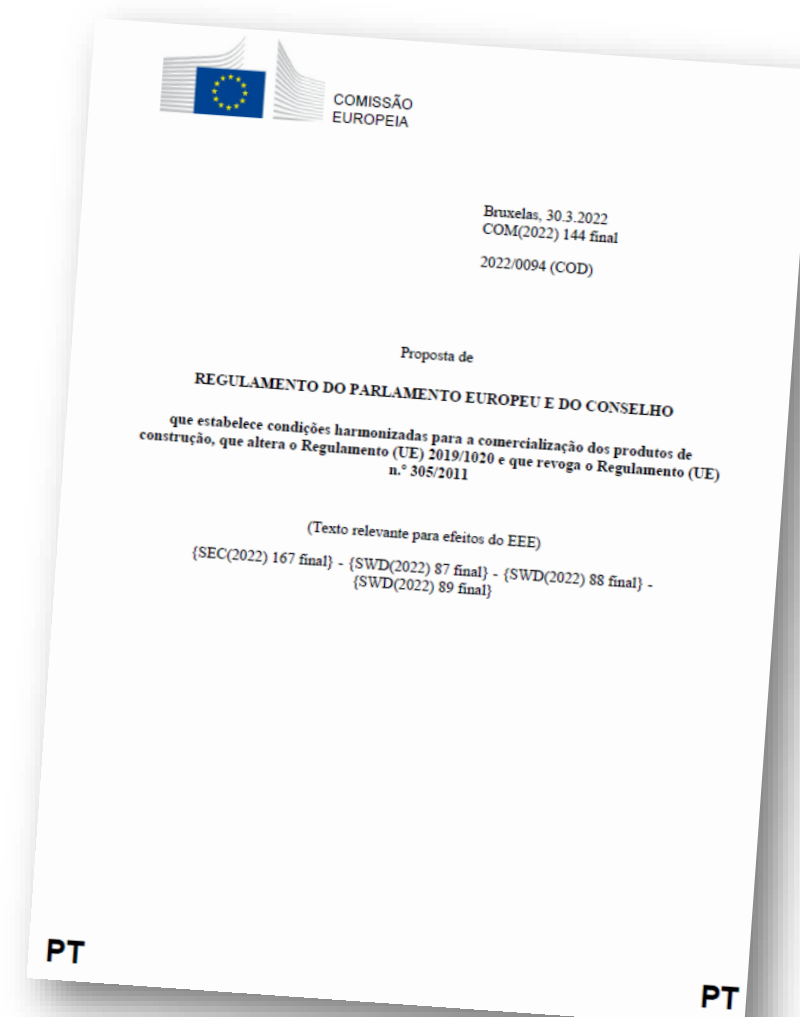


# Porque é que este assunto é importante?





## Desafios de curto prazo

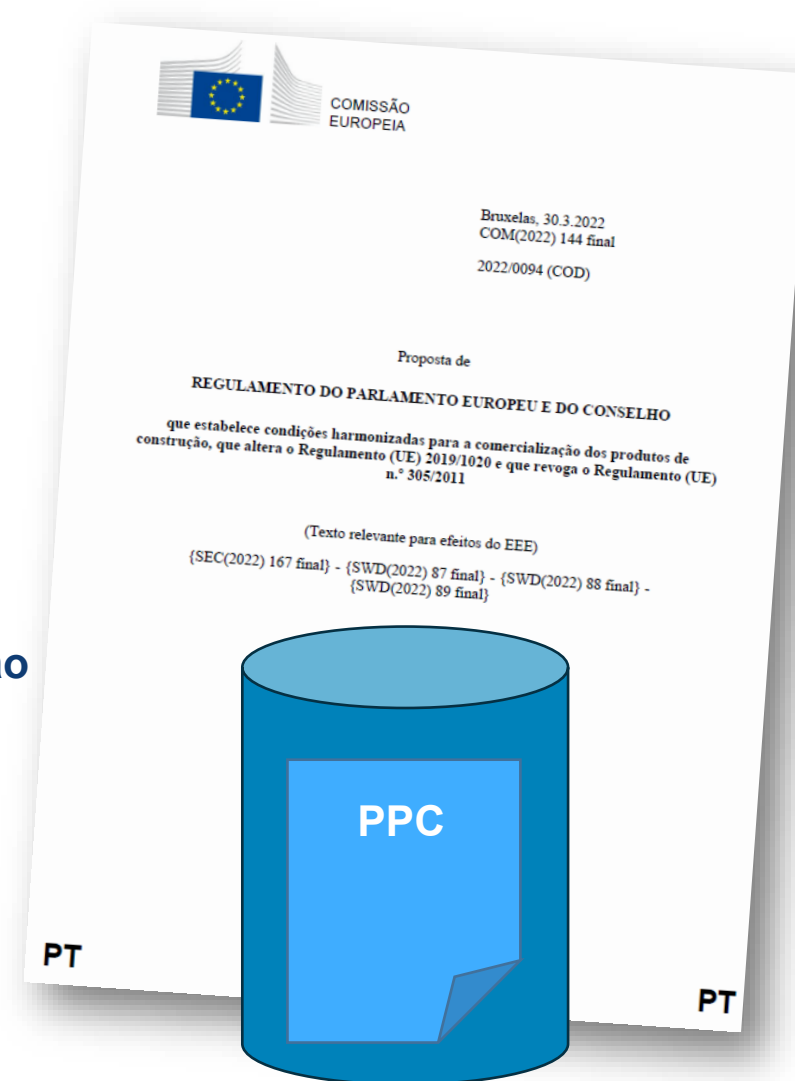


## Desafios de curto prazo

### Adequação da regulamentação e simplificação

Todos os documentos e informações relacionados com a proposta podem ser tratados em **formato digital** (por exemplo, o **passaporte digital de produtos**), bem como armazenados, partilhados e consultados de forma duradoura num sistema de informação.

### Artigo 78º Base de dados ou sistema de produtos de construção da União



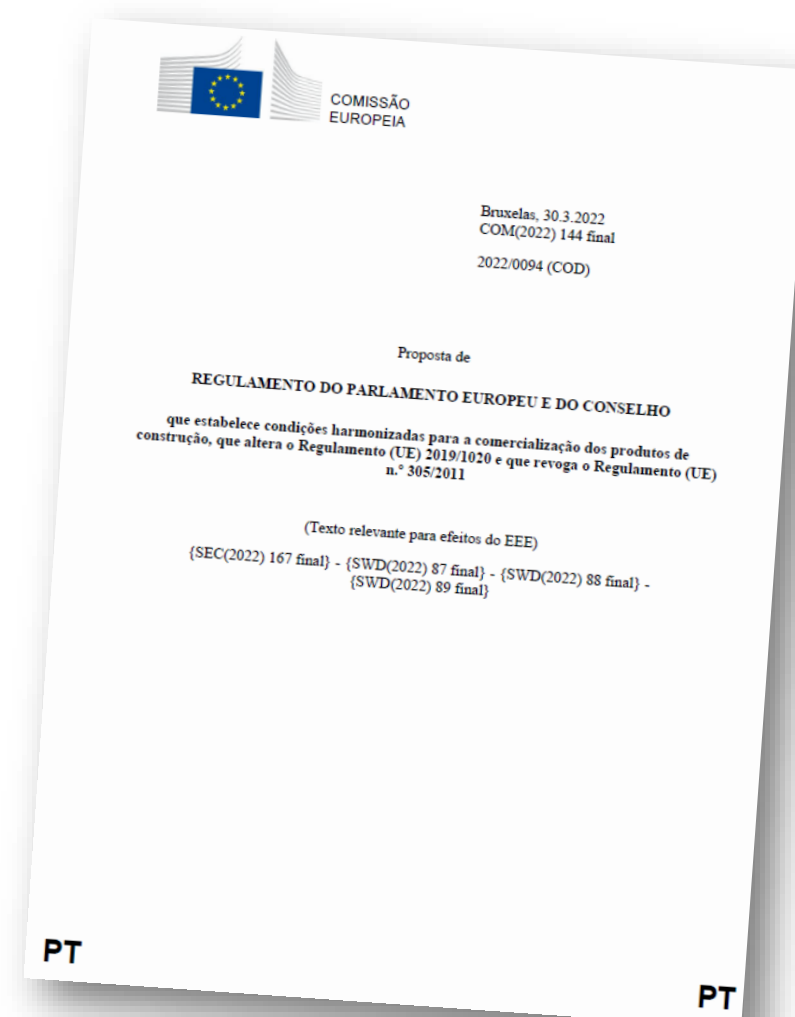
## Desafios de curto prazo

Fichas técnicas harmonizadas para os materiais de construção +  
Declarações de Desempenho + Marcação CE + Declarações  
Ambientais de Produto + outros dados

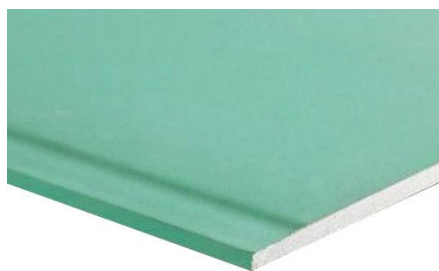
=

Passaporte  
digital dos  
Produtos de  
Construção

(PPC)



## Desafios de curto prazo



Estrutura que suporte as características dos produtos de construção

Digital (metadados)

Interoperáveis

Dados rastreáveis

Fonte comum e única da informação

## O ETIM

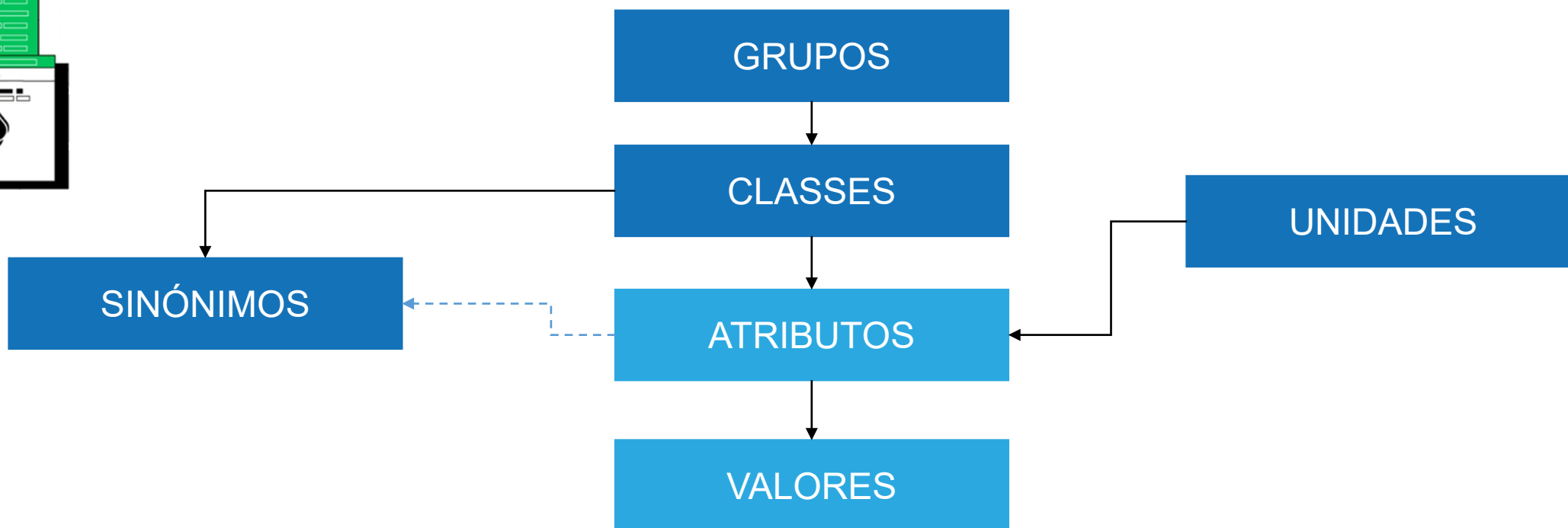


**ETIM**  
*International*





## O ETIM – A sua estrutura



## O ETIM – A sua estrutura

### Gypsum board

Class code	EC003143	Class version	4
Sector	W B M	Revision	4
Group code	EG020100 - Building - Finishing materials	Status	UnderConstruction
Releases	<b>DYNAMIC</b>		



							Show/hide
Def	Code	Description	Type	Unit	Unit (imp.)	Value code - Description	
1	EF001438	Length	N	mm	inch		
2	EF000008	Width	N	mm	inch		
3	EF000125	Thickness	N	mm	inch		
4	EF000167	Weight	N	kg/m <sup>2</sup>	lb/ft <sup>2</sup>		
5	EF010361	Edge finishing long side	A				
6	EF010362	Edge finishing head end	A				
7	EF010366	Colour visible surface	A				
8	EF000664	Suitable for wall mounting	L				
9	EF010223	Suitable for floor	L				
10	EF021180	Suitable for ceiling mounting	L				
11	EF024696	Suitable for damp space	L				
12	EF021057	With insulation	L				
13	EF010096	Fire retardant impregnated	L				
14	EF010359	Suitable as plaster board	L				
15	EF025016	With perforation	L				
16	EF010227	With decorative finish	L				
17	EF022045	Lead insert	L				
18	EF001281	Bendable	L				
19	EF013884	Suitable for fire protection of load-bearing constructions	L				
20	EF013908	Fixing	L				
21	EF002480	Outdoor application	L				
22	EF013887	Suitable for protection from radiation	L				
23	EF013888	Factory bent board	L				
24	EF001210	Glass-fibre reinforced	L				
25	EF010369	Fleece reinforced	L				
26	EF013891	Type designation A according to EN 520	L				
27	EF013892	Type designation D according to EN 520	L				
28	EF013894	Type designation E according to EN 520	L				

## O ETIM – A sua estrutura

Gypsum board	
Class code	EC003143
Sector	W B M
Group code	EG020100 - Building - Finishing materials
Releases	<b>DYNAMIC</b>
Class version	4
Revision	4
Status	UnderConstruction



### CLASSES

#### Gypsum board

Class code **EC003143**  
 Sector **W B M**  
 Group code **EG020100 - Building - Finishing materials**  
 Releases **DYNAMIC**

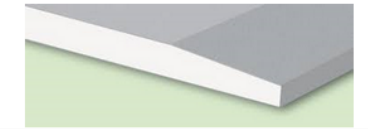
ETIM modelling classes Revisions

	Type	Unit	Unit (imp.)	Value code - Description
	N	mm	inch	
	N	mm	inch	
	N	kg/m²	lb/ft²	
	A			
	A			
	L			
	L			
	L			
	L			
	L			
	L			
	L			
13	EF010050	Fire retardant impregnated		
14	EF010359	Suitable as plaster board		
15	EF025016	With perforation		
16	EF010227	With decorative finish		
17	EF022045	Lead insert		
18	EF001281	Bendable		
19	EF013884	Suitable for fire protection of load-bearing constructions		
20	EF013908	Fixing		
21	EF002480	Outdoor application		
22	EF013887	Suitable for protection from radiation		
23	EF013888	Factory bent board		
24	EF001210	Glass-fibre reinforced		
25	EF010369	Fleece reinforced		
26	EF013891	Type designation A according to EN 520		
27	EF013892	Type designation D according to EN 520		
28	EF013894	Type designation E according to EN 520		

## O ETIM – A sua estrutura

### ATRIBUTOS

	Def	Code	Description
	1	EF001438	Length
	2	EF000008	Width
	3	EF000125	Thickness
Gypsu	4	EF000167	Weight
Class co	5	EF010361	Edge finishing long side
Sector	6	EF010362	Edge finishing head end
Group co	7	EF010366	Colour visible surface
Release:	8	EF000664	Suitable for wall mounting
Feature:	9	EF010223	Suitable for floor
	10	EF021180	Suitable for ceiling mounting
D	11	EF024696	Suitable for damp space
1	12	EF021057	With insulation
2	13	EF010096	Fire retardant impregnated
3	14	EF010359	Suitable as plaster board
4	15	EF025016	With perforation
5	16	EF010227	With decorative finish
6	17	EF022045	Lead insert
7	18	EF001281	Bendable
8	19	EF013884	Suitable for fire protection of load-bearing constructions
9	20	EF013908	Fixing
10	21	EF002480	Outdoor application
11	22	EF013887	Suitable for protection from radiation
12	23	EF013888	Factory bent board
13	24	EF001210	Glass-fibre reinforced
14	25	EF010369	Fleece reinforced
15	26	EF013891	Type designation A according to EN 520
16	27	EF013892	Type designation D according to EN 520
17	28	EF013894	Type designation E according to EN 520



Feature:

D

1

2

3

4

5

6

7

8

9

10

11

12

13

14

15

16

17

18

19

20

21

22

23

24

25

26

27

28

Show/h

Unit (imp.) Value code - Description

inch

inch

inch

lb/ft²



## O ETIM – A sua estrutura

Gypsum board

Class code EC003143  
 Sector W B M

Class version 4  
 Revision 4



VALORES

40	EF013881	Thermal conductivity according to EN 12664	N	W/(m.K)	W/(ft.K)	
		Air tightness according to EN 12114	N	m <sup>3</sup> /m <sup>2</sup> h50Pa		
		Euro fire class according to EN 13501-1	A			1 EV010732 A1 2 EV010733 A2 3 EV000074 B 4 EV000084 C 5 EV000413 D 6 EV000647 E 7 EV000334 F 8 EV000154 Other
43	EF026363	Euro class smoke production according to EN 13501-1	A			1 EV023916 s1 2 EV023917 s2 3 EV023918 s3 4 EV000154 Other
44	EF026364	Euro class flaming droplets/particles according to EN 13501-1	A			1 EV023919 d0 2 EV023920 d1 3 EV023921 d2 4 EV000154 Other
45	EF013906	Fire protection ability according to EN 13501-2	A			1 EV016315 K1-10 2 EV016316 K2-10 3 EV016317 K2-30 4 EV016318 K2-60 5 EV000154 Other
27	EF013892	Type designation D according to EN 520				L
28	EF013894	Type designation E according to EN 520				L

Show/hide  
 Value code - Description

## O ETIM no MC Digital



**ETIM**  
*Portugal*

## O ETIM no MC Digital

Acompanhamento dos trabalhos do  
Comité Técnico Materiais de Construção.

### ETIM TC - Building materials

Building  
1.148  
classes



## O ETIM no MC Digital

### Traduções

**Gypsum board**

Class code	EC003143	Class version	4
Sector	W B M	Revision	4
Group code	EG020100 - Building - Finishing materials	Status	UnderConstruction
Releases	<span style="background-color: #008000; color: white; padding: 2px 5px; border-radius: 3px;">DYNAMIC</span>		

[Features](#) | 
 [Translations](#) | 
 [Discussion](#) | 
 [Reference products](#) | 
 [Linked ETIM modelling classes](#) | 
 [Revisions](#)

	Translation	Synonyms
	Gypsum board	Ceiling board ; Drywall board ; Gypsum board ; Gypsum cardboard board ; Gypsum cardboard panel ; Gypsum fiber board ; Gypsum fibre board ; Plasterboard ; Wallboard ;
	Gipskartonplaat	Gipskartonplaat ;
	Plaque gypse	Plaque gypse ;
	Gipsplader	Fiber gips plader ; Gipsplader ;
	Gipskartonplaat	Gipskartonplaat ; Gipsplaat ; Gipsvezelplaat ; Metalstud plaat ; Plafondplaat ; Stucplaat ;
	Gypsum cardboard board	Ceiling board ; Drywall board ; Gypsum board ; Gypsum cardboard board ; Gypsum cardboard panel ; Gypsum fiber board ; Gypsum fibre board ; Plasterboard ; Wallboard ;
	Gypsum board	Ceiling board ; Drywall board ; Gypsum board ; Gypsum cardboard board ; Gypsum cardboard panel ; Gypsum fiber board ; Gypsum fibre board ; Plasterboard ; Wallboard ;
	Kipsplaat	Kipsplaat ;
	Kipsilevy	Kipsilevy ;
	Plaque gypse	Plaque gypse ;
	Gipsplatte	Gipsbauplatte ; Gipsfaserplatte ; Gipskarton-Bauplatte ; Gipskartonplatte ; Gipsplatte ; Gipsputzplatte ;
	Pannello di cartongesso	Pannello di cartongesso ;
	Gipsplate	Armert gipsplate ; Gipsfiberplate ; Gipsplate ;
	Płyta gipsowa-kartonowa	Płyta g/lk ; Płyta gipsowa-kartonowa ; Płyta l/g ; Płyta-kartonowa-gipsowa ; Regips ;
	Gipsplate	Armert gipsplate ; Gipsfiberplate ; Gipsplate ;
	Gipskiva	Fibergipskiva ; Gipsplatta ; Gipskiva ; Takgips ; Takplank ;
	Gipsplatte	Gipsbauplatte ; Gipsfaserplatte ; Gipskarton-Bauplatte ; Gipskartonplatte ; Gipsplatte ; Gipsputzplatte ;

## O ETIM no MC Digital

Melhoria das características previstas em alguns produtos.

### Sandwich panel

Class code	EC011925	Class version	4
Sector	B M T	Revision	5
Group code	EG019720 - Sheet material	Status	ReadyForPublication
Releases	<b>DYNAMIC</b>		

Features

Translations

Discussion

Reference products

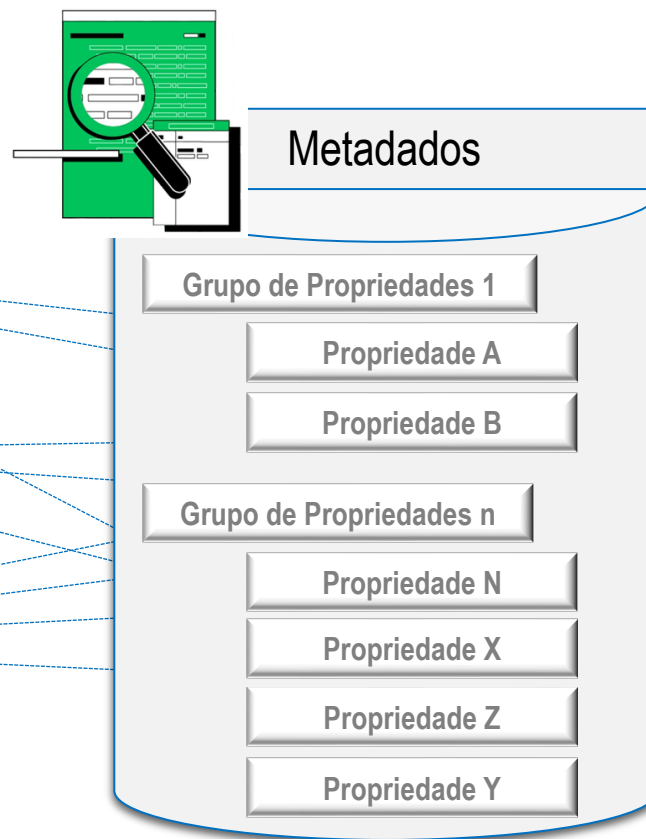
Linked ETIM modelling classes

Revisions

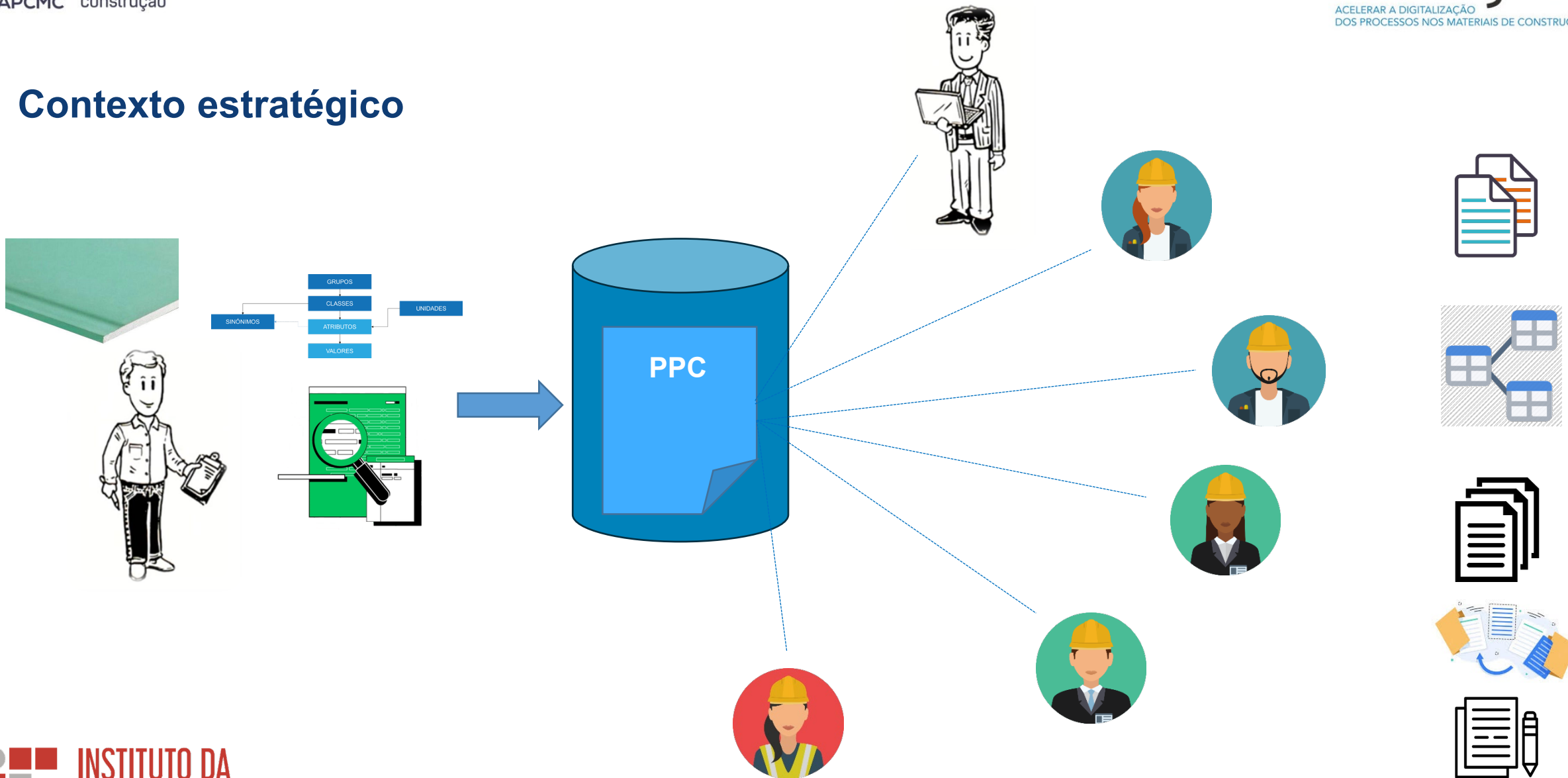
	Def	Code	Description	Type	Unit	Unit (imp.)
1		<a href="#">EF025663</a>	Material sheet 1	A		
2		<a href="#">EF025664</a>	Material sheet 2	A		
3		<a href="#">EF022576</a>	Material core	A		
4		<a href="#">EF025668</a>	Surface protection sheet 1	A		
5		<a href="#">EF025669</a>	Surface protection sheet 2	A		
6		<a href="#">EF025665</a>	Thickness sheet 1	N	mm	inch
7		<a href="#">EF025666</a>	Thickness sheet 2	N	mm	inch
8		<a href="#">EF025670</a>	RAL-number sheet 1	N		
9		<a href="#">EF025671</a>	RAL-number panel 2	N		
10		<a href="#">EF025672</a>	Overall thickness	N	mm	inch
11		<a href="#">EF000008</a>	Width	N	mm	inch
12		<a href="#">EF001438</a>	Length	N	mm	inch



## Efeito Donimó?



## Contexto estratégico



# Obrigado!

